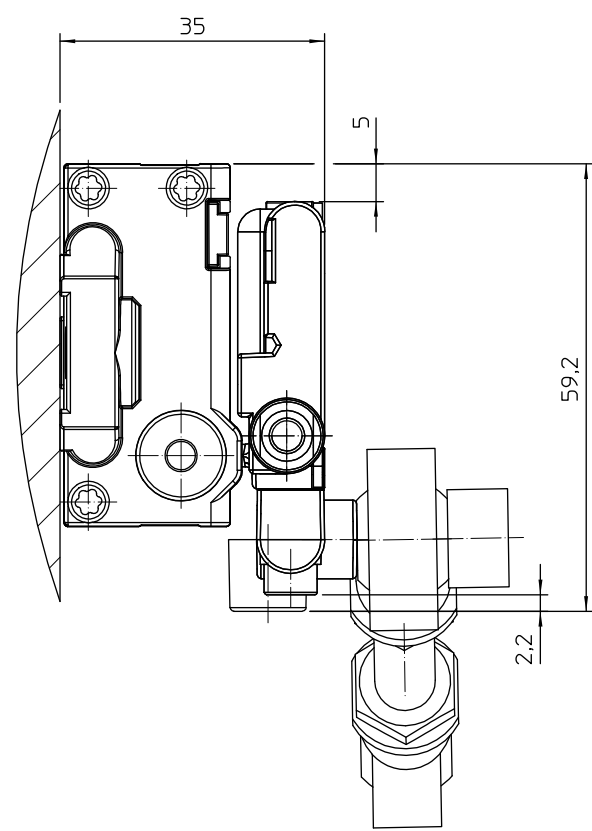
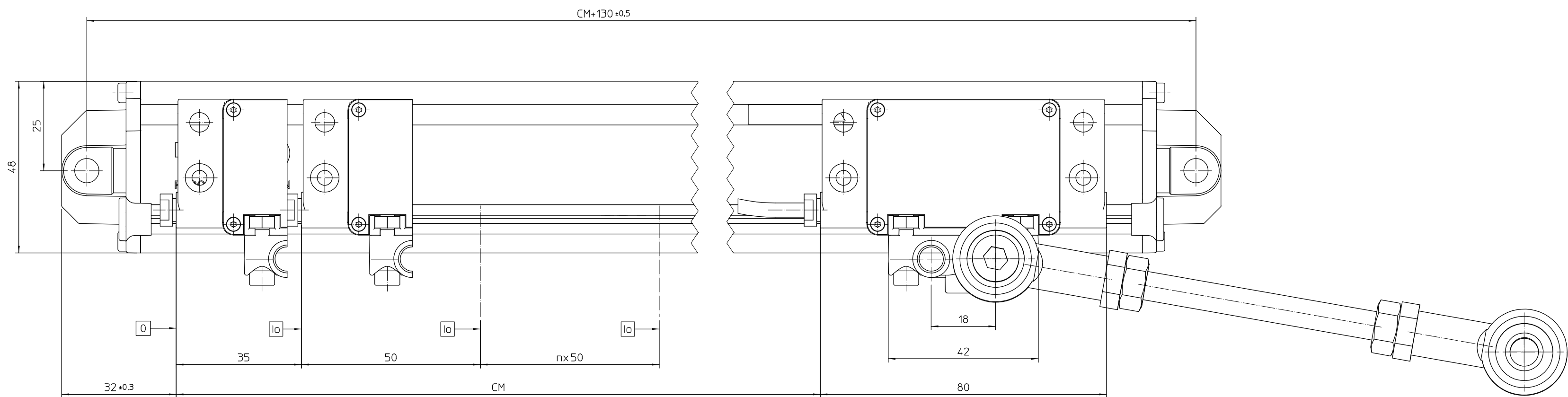


The technical drawing consists of two views of a mechanical component.

- Left View (Side Profile):** Shows the component's profile with a total length dimensioned as $\text{CM}=144$. A vertical dimension of 24 is shown at the left end, and a horizontal offset of 10 is indicated near the base.
- Right View (Top-Down/Perspective):** Shows the component from above. It features a long cylindrical shaft with a diameter dimensioned as $\varnothing 9.8$. A vertical dimension of 45.16 indicates the distance from the base to the start of the shaft section. Surface finish requirements are specified with symbols for 0.5G and 0.1 .



CM = Curso medición
CM = Measuring length
G = Guía máquina
G = Machine guideway
0 = Comienzo curso medición CM
0 = Code start value
lo = Marca de referencia
lo = Reference marks

						Escala: 1:1
						mm
						Tolerancing ISO 8015
						ISO 2768 - m H
						< 6 mm±0.2 mm
Nº	Modificado		Propu.	Vº Bº	Fecha	
Nº	Designación	PB-220	Cant.	Material	Acabado	
	Plano Nº	El 05-10-16		Fagor Automation S. Coop.		
	Sustituye a:	Dibujado Sormen		20500 Mandragón		
		Comprobado				
4	1	3	2	1	1	